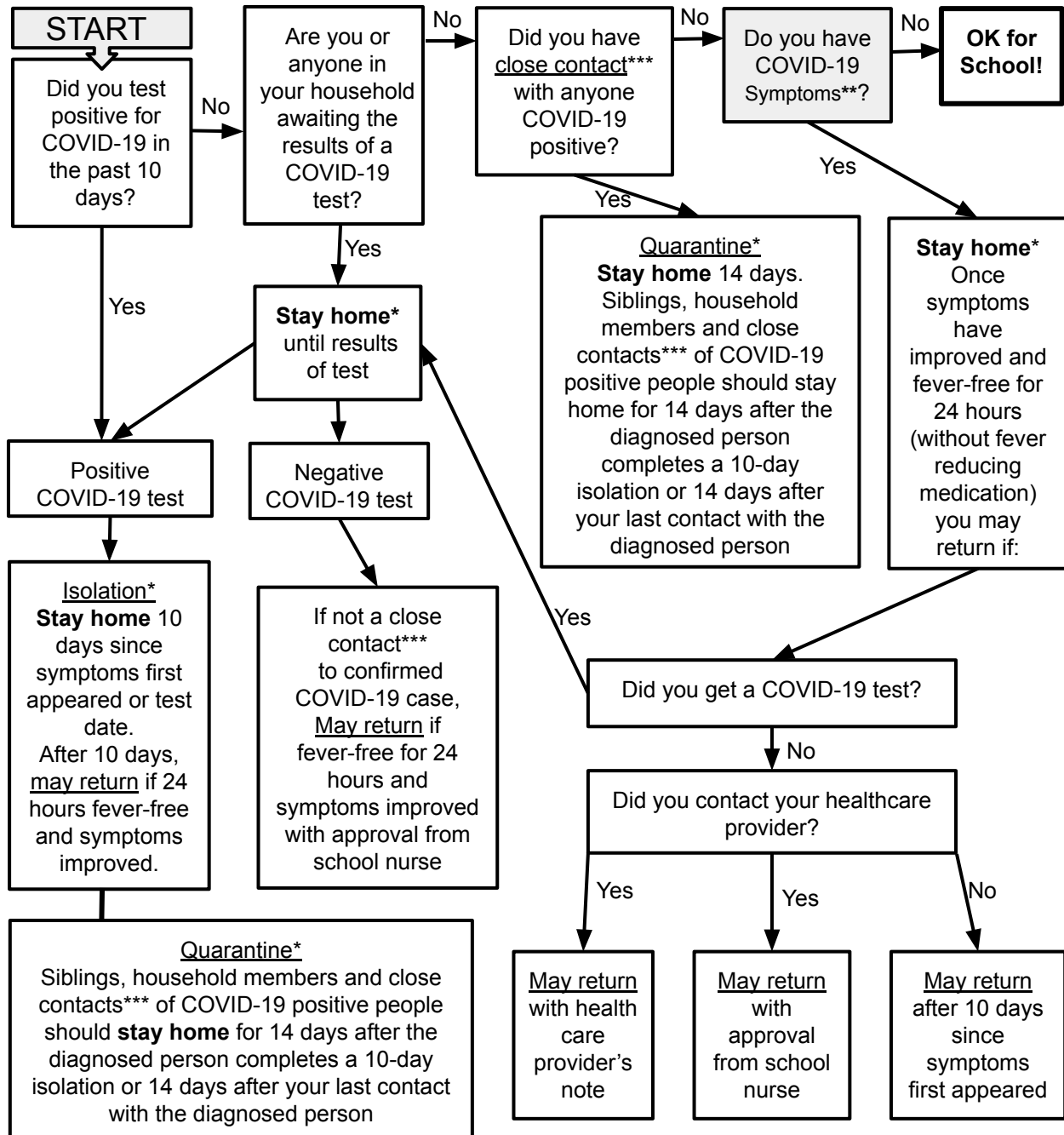


# PLYMOUTH SCHOOL DISTRICT COVID-19 DECISION TREE



## \*\*SYMPTOMS OF COVID-19

Any of 1 of the following: Cough (new, unexplained), Shortness of breath, Loss of smell/taste OR 2 or more of the following: Fever 100.4°F or greater, Chills or shivering, Sore throat, Fatigue (unusual), Muscle pain (unexplained), Headache (new, not typical), GI distress (nausea, vomiting or diarrhea), Congestion / runny nose.

⇒ If bluish lips or face, inability to wake or stay awake, new confusion, chest pain or pressure or difficulty breathing, CALL 911.

\*\*\*Close contact with COVID-19 positive person = 15 or more minutes within 6 feet, contact with secretions (cough, sneeze, towel, etc.) or overnight stay, handshake, hug, shared food, etc.

\*PSD staff - notify your direct supervisor and Amy Williams

AN/SS 8-21-2020 PSD