

Plymouth Joint School District

PLYMOUTH JOINT SCHOOL DISTRICT

Reopening Plan 2020





Students and Staff Health
and Safety

Teaching and Learning

Legal and Procedural
Considerations

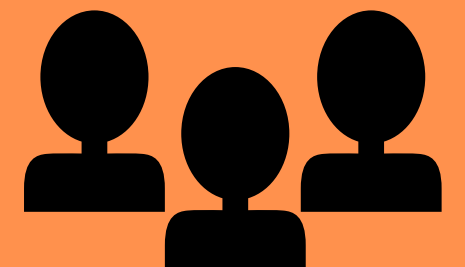


AREAS OF FOCUS

DECISION MAKING PROCESS

Stakeholder Input

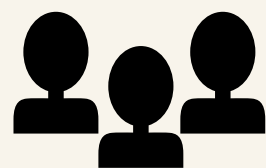
- District Leadership Team weekly meetings throughout the summer
- District Pandemic Team
- School staffs met with principals to provide input
- School subcommittees
- Professional Development/Technology Team
- School Board meetings
- Teacher surveys
- Family surveys



DECISION MAKING PROCESS

Major Guiding Organizations

- [Department of Public Instruction](#)
- [Centers for Disease Control](#)
- [American Academy of Pediatrics](#)
- [Sheboygan County Department of Public Health](#)



The DLT has been continually refining our reopening process using the data collected in the surveys and updated guidance from multiple resources..

American Academy of Pediatrics

The [AAP](#) strongly advocates that all policy considerations for returning to school should start with a goal of having students physically present in school.

DECISION MAKING PROCESS

ELEMENTARY & MIDDLE SCHOOL LEARNING OPTIONS

In-Person-STATION ROTATION 4K-6th grade

- Provide in-person learning in a safe manner following the school calendar

In-Person A/B-ROTATION 7th-8th grade option

- Student body will be divided into two groups, each half attending school on alternating days and participating in distance learning on days they're scheduled to be home.
- Siblings would be together in the same cohort.
- Same schedule as in-person traditional.

Virtual- E-LEARNING:

- Provide a virtual option that allows for a day of scheduled learning

HIGH SCHOOL LEARNING OPTIONS

In-Person A/B-Rotation

- Student body will be divided into two groups, each half attending school on alternating days and participating in distance learning on days they're scheduled to be home.
- Siblings would be together in the same cohort.
- Same schedule as in-person traditional.

The district may allow individual students, grade bands, or entire student body to attend every day in-person learning based on internal mitigation data and/or student need.

Virtual- E-Learning:

- Provide a virtual option that allows for a day of scheduled learning

NEW

VIRTUAL E-LEARNING AT HOME

Full-time virtual option will be available to all families. A minimum time commitment would be by trimester (elementary and middle school) or quarter (high school).

- Students will follow a specific schedule.
- Experience will be as synchronous as possible.
- Attendance will be taken on a daily basis.
- Students are held to the same standards as in-person learning.
- Elementary students will have a "virtual schoolhouse".
 - Students will be assigned a virtual teacher with other students at or near their grade level throughout the district, similar to a multiage approach.



IN-PERSON GUIDELINES: CLASSROOM EXPECTATIONS

- Social distancing guidelines will be followed as practicable.
- Students will be assigned seats.
- Healthy hygiene procedures and safety measures will be followed.
- Students will assist in cleaning personal work areas when age appropriate.



IN-PERSON GUIDELINES: CLASSROOM EXPECTATIONS

Survey Feedback - Top three concerns aligned with family and staff surveys.

Families

Sanitation of supplies-
readily available

Sanitation of classrooms and spaces
on regular basis

Symptom checks

Staff

1 Requiring those who
are sick to stay home

2 Sanitizing and extensive cleaning

3 Promoting hand-washing
and proper hygiene

IN-PERSON GUIDELINES: RECESS EXPECTATIONS

AAP Guidance on Playgrounds: Enforcing physical distancing in an outside playground is difficult and may not be the most effective method of risk mitigation. Emphasis should be placed on cohorting students and limiting the size of groups participating in playground time. Outdoor transmission of virus is known to be much lower than indoor transmission.

- Recess will be outdoors when possible.
- Students will be placed in cohorts to limit contact with others.
- Students will be expected to socially distance as much as possible.
- Equipment will be cleaned and sanitized on a regular basis.

IN-PERSON GUIDELINES: LUNCH EXPECTATIONS

AAP Guidance: School meals play an important part in addressing food security for children and adolescents.

- Students will be assigned seats in the cafeteria and other spaces to accommodate social distancing.
 - Elementary: cafeteria, classrooms, & other specified areas
 - MS: lunch in their classrooms
 - PHS: cafeteria, classroom space, or outdoors when possible
- Dining spaces will be cleaned and sanitized in between each use.



IN-PERSON GUIDELINES: BUS EXPECTATIONS

- Bussing will be provided for students that qualify.
- We would greatly appreciate families to explore other transportation options to and from school.
- Students will be assigned seats on the bus, wear masks, and socially distance as practicable.
- Bus drop-off and pick-up times at schools may be staggered.



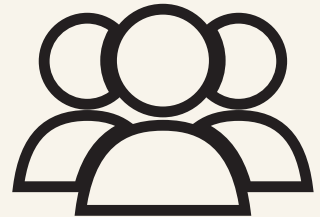
PHS: IN-PERSON OPTIONS BENEFITS

In-Person A/B-Rotation:

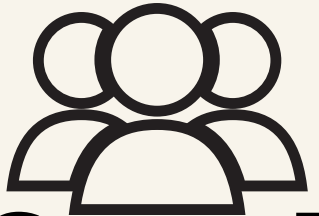
Student body will be divided into two groups, each half attending school on alternating days and participating in distance learning on days they're scheduled to be home.

- Students and teachers focus on a maximum of four classes a day
- Enhances ability to social distance
- Maintains cohort groups
- Siblings would be together in the same cohort.
- Longer class periods to accommodate new routine.
 - Allows for staff to connect with e-learning students.
 - Allows for sanitization procedures
- [Based on family survey slightly more families would attend in-person via the A/B Rotation.](#)

PHS IN-PERSON A/B ROTATION

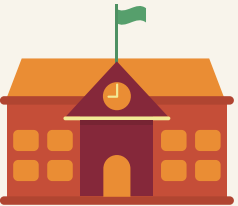


Group A



Group B

Monday



Tuesday



Wednesday



Thursday



Friday



EXTRA-CURRICULAR ACTIVITIES

At the high school level, the conference will continue all activities following the guidance from WIAA, DPI, ECC and Public Health to develop our plan for extra-curricular activities. The district will weigh County Health recommendations among all other information when changing plans for extra curricular activities.

The middle school will also continue all activities on a limited schedule to meet the same guidelines used at the high school level.



COMMUNITY EDUCATION AND RECREATION

- **Childcare** (before and after school care) will be provided at certain school sites following guidance from AAP, CDC, and state and local health departments.
- Information regarding other **programs and building usage** will be continually updated on the district website.



SAFETY PROTOCOLS

The [AAP](#) strongly advocates that all policy considerations for the coming school year should start with a goal of having students physically present in school.

- Health Screening
 - Elementary: At-home screenings with additional in-school temperature checks
 - MS/HS: At-home screenings
- Social distancing as practicable.
- Hand Hygiene: Regular hand washing will be mandated throughout the day
- Face Coverings: Face coverings are required indoors for individuals age 5 and above. Accommodations made for physical, medical or developmental needs.



SAFETY PROTOCOLS

- Seating charts be maintained in all spaces.
- Cohorts will be maintained to limit student contact.
- District spaces have been analyzed for safe social distancing.
- Extra nursing stations will be created in each building.
- Outside visitors (volunteers, lunch guests, etc.) will be limited and screened.
- Regular communication regarding any health concerns will be shared.



SAFETY PROTOCOLS

- Signage and floor markings will be placed to direct traffic flow.
- Students will use personal materials and supplies when practicable.
- Air filtration system has been updated to maintain excellent air quality.
- Outdoor air flow into school buildings has been increased.
- Electrostatic cleaning techniques will be used regularly.
- Extensive cleaning and sanitization of spaces, particularly high-touch areas, will take place.
- Hand sanitizing stations will be in various locations throughout each school.
- Hand sanitizer will be available in each classroom.



Note: District wide cleaning days may be added to the calendar as needed with advance notification to families. No new learning will occur on these days.

SAFETY PROTOCOLS

Staff and students that present COVID symptoms, have tested positive, or have been exposed to a positive case will be subject to the safety protocols under guidance from Public Health and school nursing staff.

- Details will be shared once Public Health has distributed their updated recommendations.



ADDITIONAL COSTS

Staffing

- Teachers for E-Learning
- Teacher Aides
- Nursing Staff
- Full-time sub

Cleaning and Mitigation

- Cleaning Staff
- Sanitizer
- PPE
- Plexiglass
- Thermometers

Technology

Transportation

Food Service

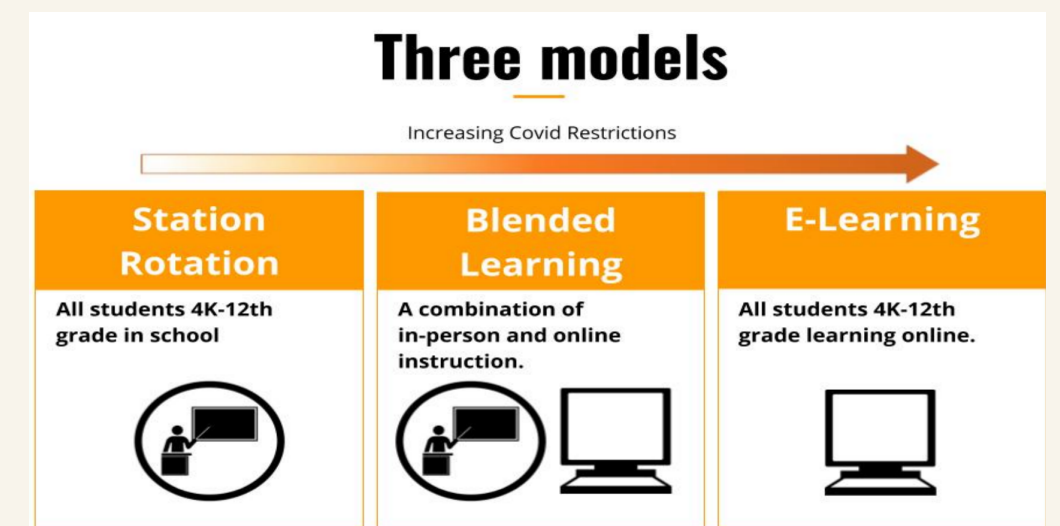
NEXT STEPS & FUTURE CONSIDERATIONS

- Each school building will continue to work with staff to review level-specific procedures aligned with this school reopening process.
- We will continue to reassess the models with CDC, DPI, AAP and Public Health guidance.
- Parents will be notified through Skylert and Skyward email for updates and changes.

NEXT STEPS & FUTURE CONSIDERATIONS

Transitioning Between Models

- School, parents and students **must be prepared** to transition between models, based on current public health scenarios.
- Models may change due to Public Health guidance.
- **When changes are recommended by County Health metrix the district will consider recommendations but will not be bound by them.**



NEXT STEPS & FUTURE CONSIDERATIONS

Families:

- Update family contact information in Skyward with email and phone numbers.
- Review tips for preparing students to return to school
 - [Click here for Nurse tips](#)



We thank all students, parents, staff, and community members for their ongoing flexibility and understanding as we continue to navigate these difficult times together.

We encourage all district families with questions and concerns to contact district office or building principals as needed.

Together, we will continue to help our students become their best!

