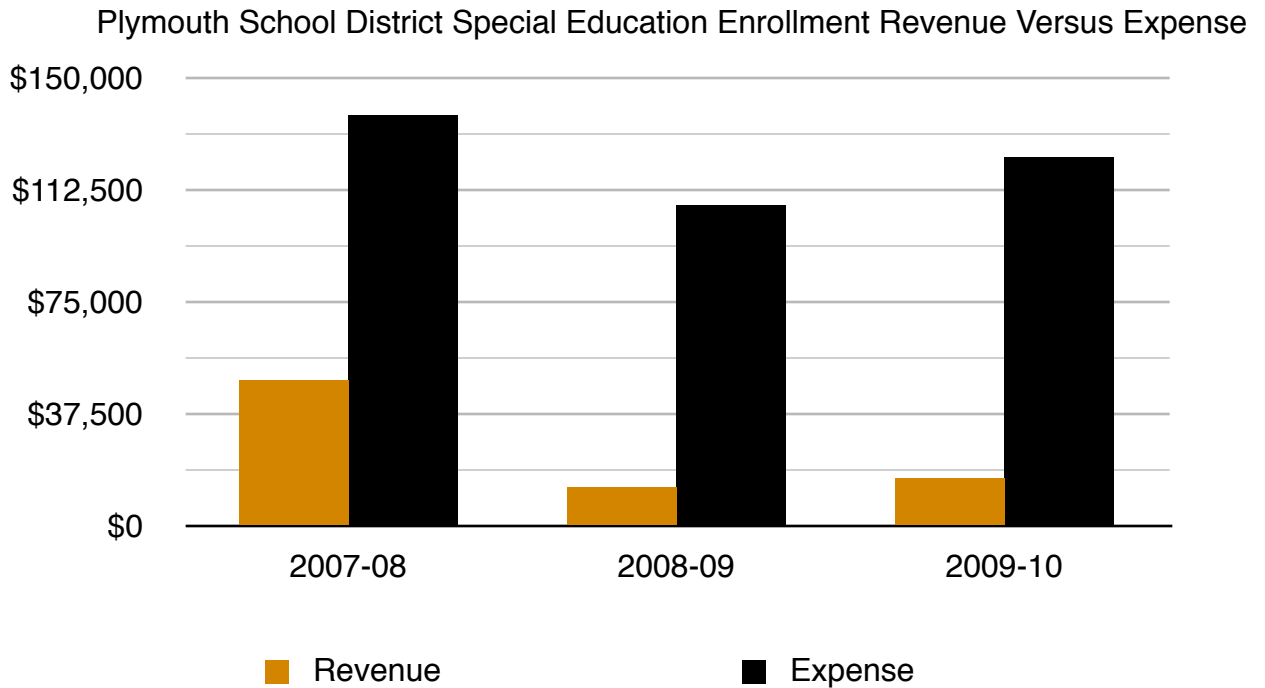
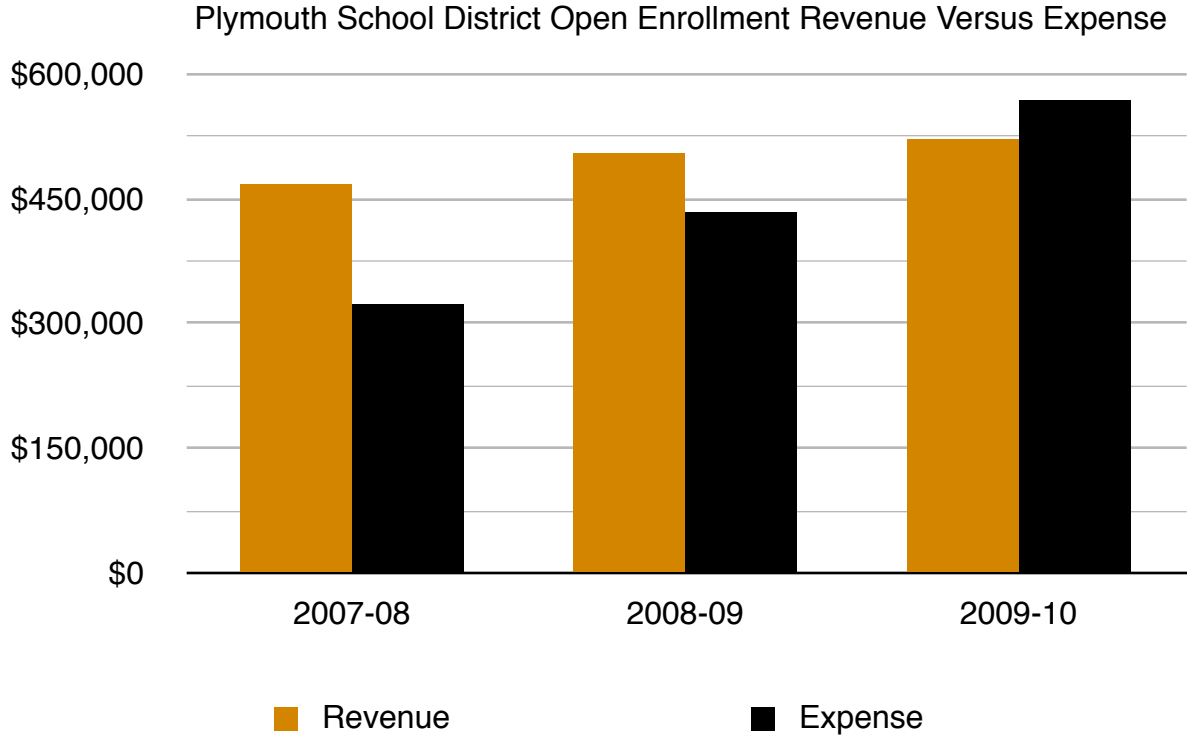


# Plymouth School District Pillar of Excellence

Financial Pillar of Excellence



# Plymouth School District Pillar of Excellence

Financial Pillar of Excellence

## Cost Per Member Comparison

2007-08

<b>Cost Per Member Comparison</b>	<b>Education</b>	<b>Transport</b>	<b>Facility</b>	<b>Total</b>
Plymouth	\$7,785	\$499	\$1,028	\$10,340
Peer Average	\$8,103	\$428	\$1,050	\$11,030
County Average	\$8,155	\$1,368	\$919	\$10,819
State Average	\$8,465	\$468	\$1,115	\$11,382

2008-09

<b>Cost Per Member Comparison</b>	<b>Education</b>	<b>Transport</b>	<b>Facility</b>	<b>Total</b>
Plymouth	\$8,026	\$398	\$1,133	\$10,626
Peer Average	\$8,499	\$477	\$1,004	\$11,387
County Average	\$8,382	\$398	\$1,027	\$11,196
State Average	\$8,827	\$466	\$1,130	\$11,816

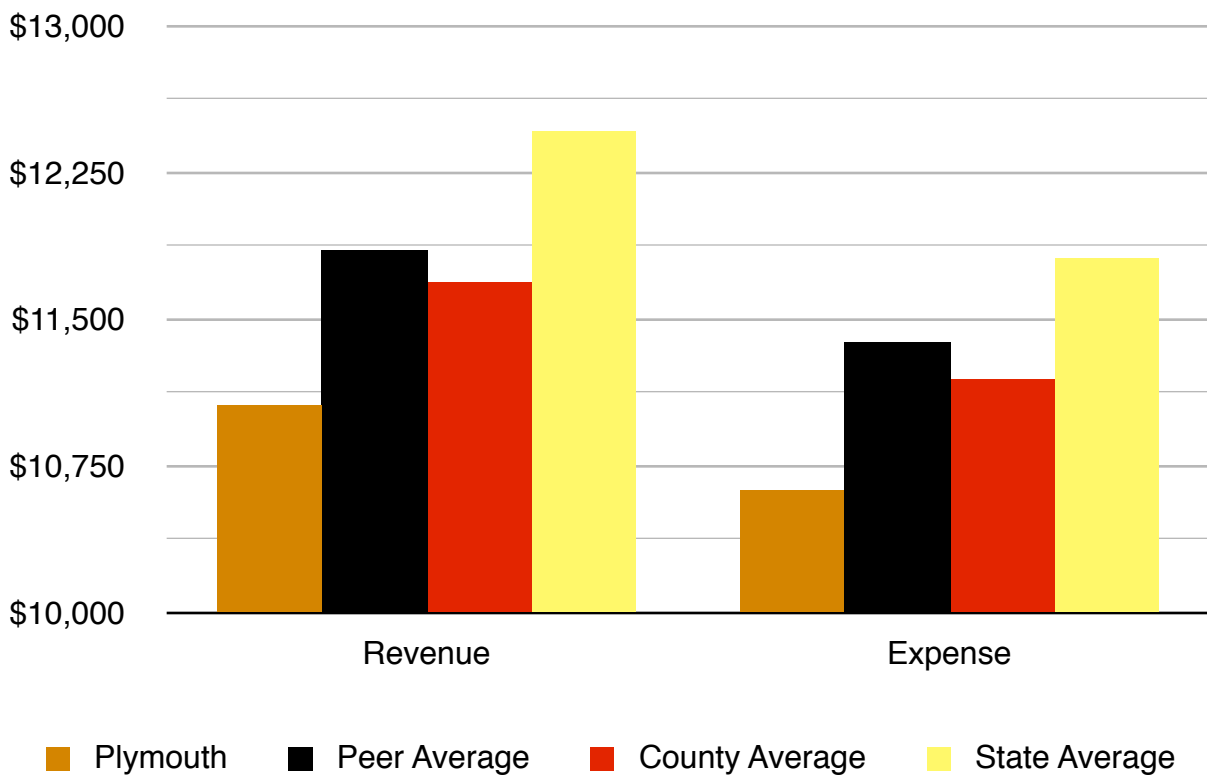
## Revenue Per Member

	<b>2007-08</b>	<b>2008-09</b>
Plymouth	\$10,832	\$11,062
Peer Average	\$11,645	\$11,857
County Average	\$11,333	\$11,692
State Average	\$12,010	\$12,463

# Plymouth School District Pillar of Excellence

Financial Pillar of Excellence

### Per Member Revenue Versus Expense 2008-09



# Plymouth School District Pillar of Excellence

Financial Pillar of Excellence

## Administrative Salary Comparison

2007-08

<b>Salaries</b>	<b>Superintendent</b>	<b>Business Director</b>
Plymouth	\$120,107	\$78,000
Peer Average	\$131,975	\$96,720
County Average	\$117,514	\$92,574

2008-09

<b>Salaries</b>	<b>Superintendent</b>	<b>Business Director</b>
Plymouth	\$123,236	\$80,855
Peer Average	\$134,811	\$99,238
County Average	\$118,817	\$82,160

2009-10

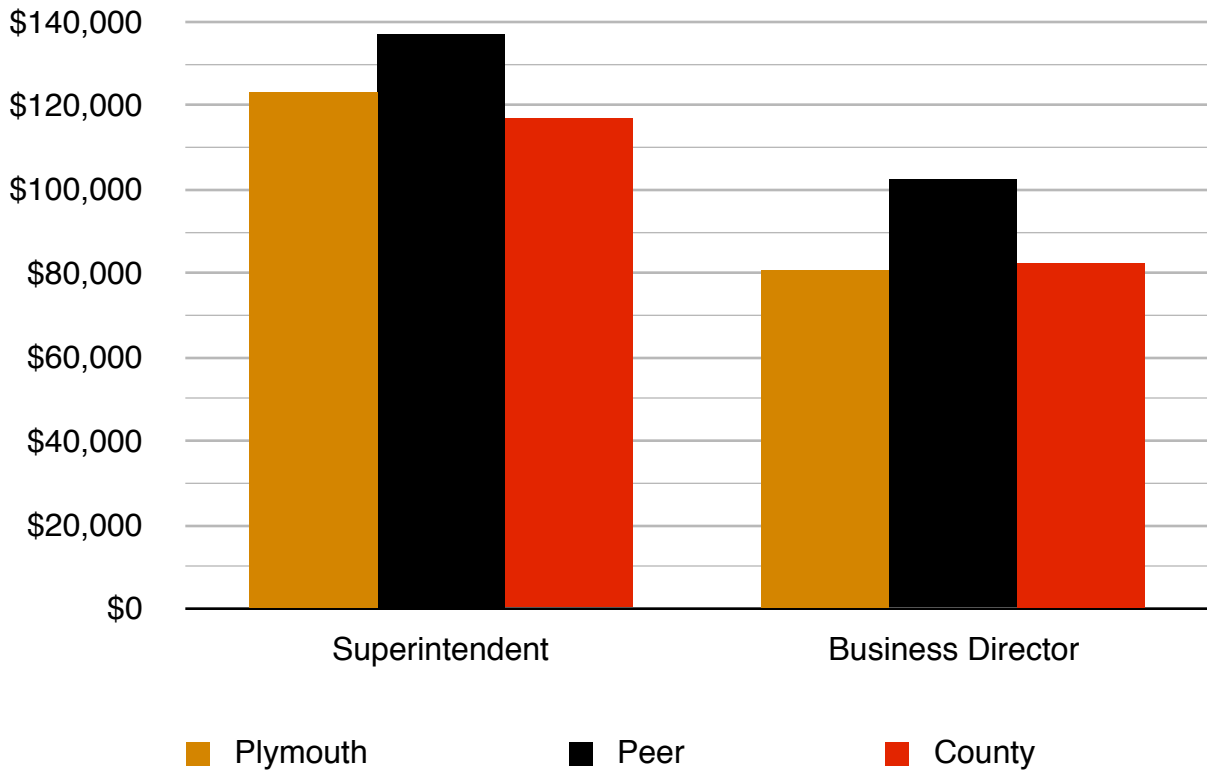
<b>Salaries</b>	<b>Superintendent</b>	<b>Business Director</b>
Plymouth	\$123,236	\$80,855
Peer Average	\$137,179	\$102,381
County Average	\$116,963	\$82,534

The Department of Public Instruction collects salary data on various administrative positions. The terms, length and benefits of these contracts varies. This is only an attempt to capture the cost of gross salary of two positions that are routinely full year positions.

# Plymouth School District Pillar of Excellence

Financial Pillar of Excellence

## Administrative Salary Comparison



# Plymouth School District Pillar of Excellence

Financial Pillar of Excellence

## Teacher Salaries Comparison

2007-08

<b>Comparative Teacher Salaries</b>	<b>BA/Base</b>	<b>MA/Max</b>	<b>Teacher Max</b>
Plymouth	\$33,453	\$57,016	\$60,506
Peer Average	\$32,426	\$59,154	\$69,562
County Average	\$32,589	\$57,058	\$62,304
State Average	\$31,143	\$52,522	\$57,726

2008-09

<b>Comparative Teacher Salaries</b>	<b>BA/Base</b>	<b>MA/Max</b>	<b>Teacher Max</b>
Plymouth	\$34,482	\$58,771	\$62,368
Peer Average	\$33,900	\$60,154	\$71,097
County Average	\$33,696	\$57,977	\$63,471
State Average	\$32,299	\$54,393	\$59,838

2009-10

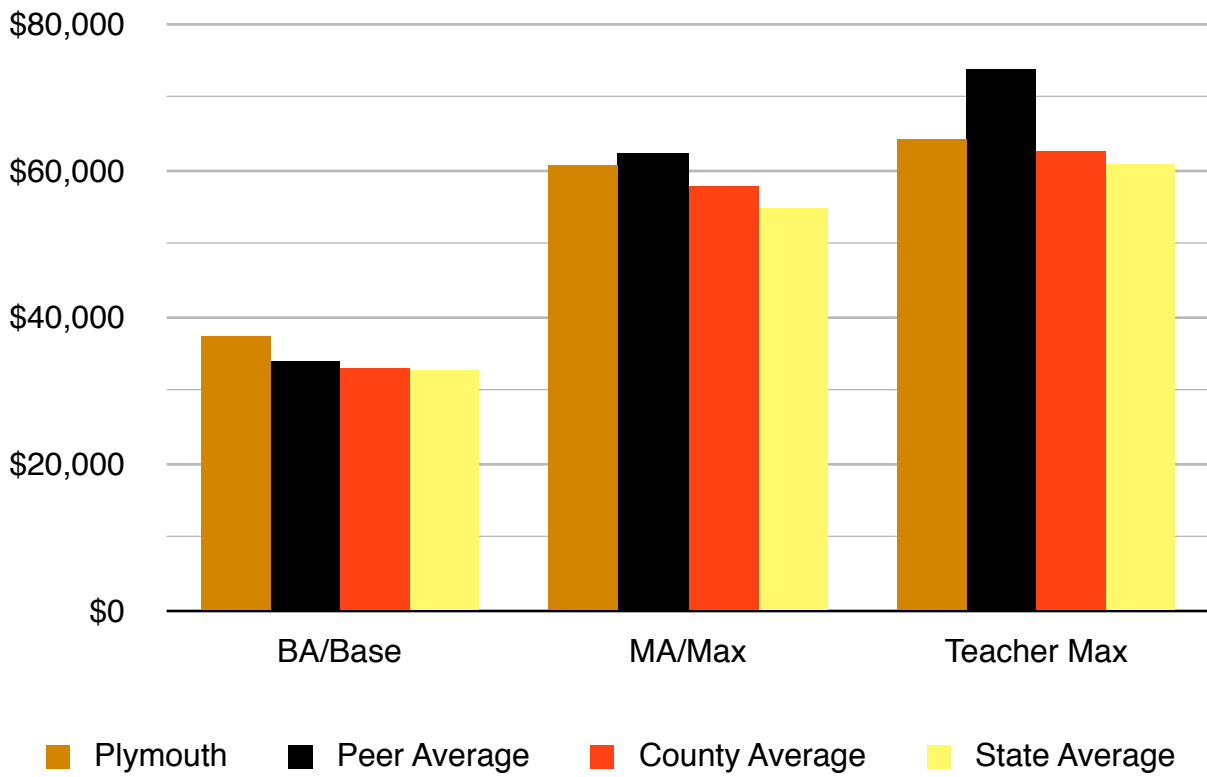
<b>Comparative Teacher Salaries</b>	<b>BA/Base</b>	<b>MA/Max</b>	<b>Teacher Max</b>
Plymouth	\$37,459	\$60,768	\$64,365
Peer Average	\$34,067	\$62,451	\$73,830
County Average	\$33,171	\$57,938	\$62,768
State Average	\$32,810	\$54,874	\$60,912

The Wisconsin School Board Association collects data on settled teacher contracts and establishes various benchmarks. The state average is only indicative of those settled contracts reporting to the WASB the particulars of their settlements.

# Plymouth School District Pillar of Excellence

Financial Pillar of Excellence

### 2009-10 Comparative Teacher Salaries



# Plymouth School District Pillar of Excellence

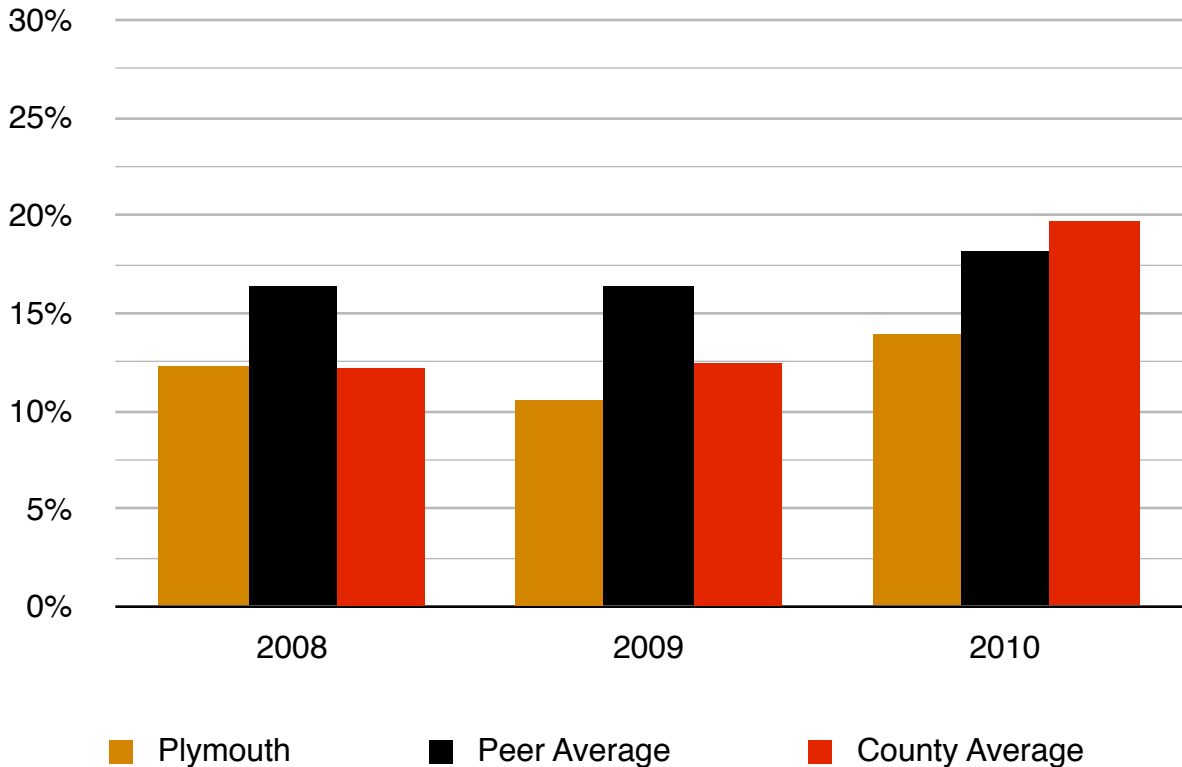
Financial Pillar of Excellence

## End of Year (EOY) Fund Balance Comparison

	EOY 2008 Fund Balance as a % of Expenditures	EOY 2009 Fund Balance as a % of Expenditures	EOY 2010 Fund Balance as a % of Expenditures
Plymouth	12.28%	10.58%	13.91%
Peer Average	16.38%	16.38%	18.17%
County Average	12.22%	12.46%	19.70%

Fund Balance Percentage is a liquidity measure that determines what percentage of annual expense is covered by the invested funds of the district. The greater the percentage of fund balance, the less the need for debt financing of ongoing expenditures over the course of the year. As in all data presented, the averages are of the observations with the group and are not weighted for the relative size of the data unless otherwise noted.

End of Year Fund Balance as a % of Expenditures



# Plymouth School District Pillar of Excellence

Financial Pillar of Excellence

## State Aid

